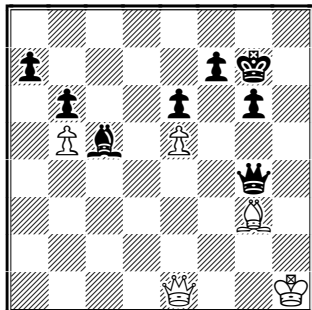


## Chess Swindle

Brown – Wiggerman  
Leuven Open 2003,



White to play – What move did I play  
to set a trap and swindle a draw?

## Chess News

by GM Alex Baburin

The final game of the Kasparov – X3D Fritz match was a rather boring affair. Kasparov, playing Black, opted for the Queen's Gambit Accepted. The computer got an isolated d-pawn. It developed the c1-bishop to f4 – quite an unusual place for the bishop. I trust that the plan with a2–a3 and Qd1–d3 is much more dangerous for Black, but Fritz obviously did not read *Winning Pawn Structures!* ☺ Anyway, the computer quickly cleared the centre with d4–d5, following the game Dorfman–Kharlov, France 2001. It seems that both players were happy with a draw, giving yet another trump to the conspiracy theory fans! ☺ You can see the game in our database.

## Letters to the Editor

"Dear Mr Baburin,  
In CT-1105 you wrote about Mr Arkadi Gilman (90), who is still playing chess. But as I wrote also to Chess Base, the chess world must not forget Grandmaster Enrico Paoli who will turn 96 next January (he was born on 13.01.1908) – he is still playing at Master level. He played this year in the

international opens in St. Vincent and in Bratto, with good results. Next December (5–8) he will play in Milan.

Paoli won a lot of tournaments all over the world (the first international was Vienna 1950–51, ahead of Grünfeld) and played with almost all the main players of last century. He is also a chess composer and international Arbiter. Last January both Kasparov and Karpov sent their greetings on Paoli's 95 birthday!

Paoli is also the main organizer of the international tournament in Reggio Emilia, coming to its 46th edition! this year (26 December 2003 – 4 January 2004). He also wrote many books and was 3 times Italian champion (the last one when 60 years old!). ECU stated to award Enrico Paoli with an European Award next February 2004, during the Open in St. Vincent, where he will play!

Many thanks for you kind attention!  
*Best regards, Adolivio Capece, Italy"*

## The Leuven Open 2003

By Graham  
Brown



*CT on tour! – Myself & Mikhail Golubev*

**T**his year as usual, The Desperado Chess club of Leuven ran their 15<sup>th</sup> Open tournament from 7<sup>th</sup> to 11<sup>th</sup> November.

This is a popular event and attracts all standards of chess players from all over the world from 1200 to 2600+ Elo rating. This year Chess Today's GM Mikhail Golubev (2536) and myself (1952) were playing and we met for the first time after 1000s of emails! We also met CT reader Ken Castle. Ken

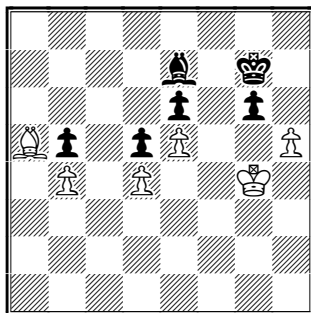
*This issue is prepared by GM Mikhail Golubev; technical editor Graham Brown.*

*Subscription is 15 Euros for 3 months. For further details please refer to <http://www.chesstoday.net>*

ended up having to go home early before the final round, sick with a terrible cough. But I'm sure he enjoyed the event like I did. Ken (rated 1784) got off to a great start with a draw against a 2228 player! If only I could have had any result like that. With me, each day brought some reward from the 2 games since if I lost, I got an opponent more my own strength, but winning always took me too near to the sun! But it was a great experience.

Mikhail looked at both Ken's games and mine whenever he went past. I was hoping my opponents would notice this fact! ☺ Mikhail showed me directly after my draw with Gunther how I could have won the game.

**Gunther 1803 - Brown 1952**  
Leuven Open 2003, R7



Black to play

Here I played **37...g5?** - Mikhail pointed out a win for me after the game! Can you see what I missed? See the cbv file for the answer.

Mikhail started with 4½ out of 5 and then got drawn against the brilliant Epishin (2658) who was blasting all comers! Mikhail managed to draw with him and after this, another GM seemed to emerge as a possible winner. This was GM Eugenio Torre. Indeed in the final round the board 1 clash was Mikhail against Torre. Mikhail had to win to share 1<sup>st</sup> prize, but sadly lost this game. Fortunately for us he managed to get an interview with GM Torre right after his game! ☺

He has also annotated the game later in this issue. You can find full results, photos and games at the [official Website](#) and also at [my club's page](#). Maybe I will meet more CT readers next year at Leuven!? ☺

**Interview with GM Torre**

*by GM Mikhail Golubev*



- *Congratulations on your victory! These days you are not participating in tournaments very often...*

- Yes, there are not many tournaments in Asia. I play mainly in the Chess Olympiads, other team tournaments and in the Zonals.

- *Once you were a World Championship Candidate...*

- Yes, I qualified from Toluca Interzonal in 1982, and then I lost a Quarterfinal Candidates Match to Ribli in 1983.

- *Is Toluca your greatest achievement in tournaments till now?*

- Not quite. In 1976 I won a tournament in Manila, where Karpov, Ljubojevic and Browne also played. There I won against Karpov, who was a World Champion then.

- *How many times have you beaten Karpov?*

- Twice. The second occasion was in London, 1984.

- *Are you involved in other chess activities, apart of playing?*

- I am also a coach and I was at the Youth World Championships in Greece to help our players.

- *Do you have any official position?*

- No. In 2000 I was a President of our Federation for one year. But it is difficult to be a President and also an active player at the same time. Some contradictions always emerge. Still, I got experience in working with sponsors, and now sometimes I can help to find money for chess.

- Is the state supporting leading Filipino players?

- Yes, there is permanent, minimal support from the Government, from the Filipinos Sports Commission. Sometimes sponsors appear and players can get more. Our participation in the Leuven tournament [also playing were Antonio, Villamayor and Barbosa] is also supported by our country.

- What is the current state of chess in Philippines?

- Chess is still popular. But not as much as in the past, when Campomanes organised some great tournaments.

- Is there a chess program on your national TV?

- For the moment not. By the way, there was a program in the 1970s. And do you know what it was called? 'Chess Today'! ☺

- In English?!

- Yes, in English.

- Sorry - it seems that we have stolen the name! ☺

- No problem! ☺

- Is chess recognised as a sport in Philippines?

- Very importantly, chess became a 'medal sport' after it was included in the program of SEA Games (Southeast Asian Games). The next Games will start on December 5<sup>th</sup>, and we are preparing for this tournament.

## Annotated Games

by GM Mikhail Golubev

□ GM M. Golubev (2536)

■ GM E. Torre (2508)

Leuven (9), 11.11.2003 C46

**1.e4 e5 2.♘f3 ♘c6 3.♘c3 ♙c5!?**

Black avoids the Four Knights Defence (3...♘f6).

**4.♗xe5! ♗xe5**

4...♙xf2+?! 5.♝xf2 ♗xe5 6.d4 clearly favours White.

**5.d4 ♙d6 6.dxe5 ♙xe5 7.♞d3 ♗f6**

*This issue is prepared by GM Mikhail Golubev; technical editor Graham Brown.*

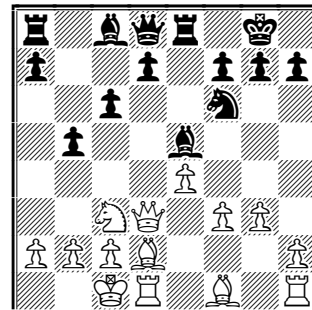
*Subscription is 15 Euros for 3 months. For further details please refer to <http://www.chesstoday.net>*

CT-323(1107) Page 3 of 5

**8.♙d2 0-0 9.0-0-0 ♞e8 10.f3**

An alternative is 10.♞e1 c6 as happened in Larsen-Torre, Bad Homburg 1998 and other games. But after 9...♞e8 I was already "out of book".

**10...c6 11.g3 b5!? (D)**



Starting from this point, Black aimed to develop an initiative on the queenside (invariably rejecting all the possibilities to play ...d5!?), and White aimed to carry out an f4 and e5 advance. Not bad would be 11...d5!?, with idea 12.exd5 cxd5 13.f4?! ♙xc3 14.♙xc3 ♙g4!.

**12.♙g2 b4 13.♗e2**

At least no worse would be 13.♗a4?! ♞a5 14.♞b3.

**13...♞a5**

Once again, interesting was 13...d5!? 14.f4 ♙c7 15.e5 ♗g4 or even 14...♙xb2+!? 15.♝xb2 ♗xe4.

**14.♞b3!**

Better than 14.♞b1 ♙a6! 15.♞e3 d5!?

**14...♞b8 15.f4 ♙c7**

Not 15...d6? 16.fxe5 ♙e6 17.♞a3!.

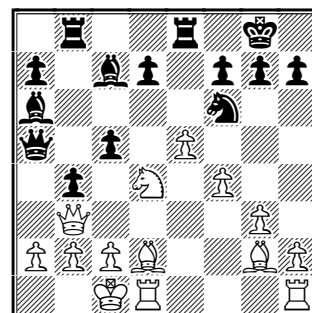
**16.e5 ♙a6!**

Both sides have completed their plans, and a very tense situation has arisen.

**17.♗d4** Better was 17.♞he1!?, with mutual chances.

**17...c5! ♞ (D)**

I hoped for 17...♗g4?! 18.♙e1!?



**18.a3!?**

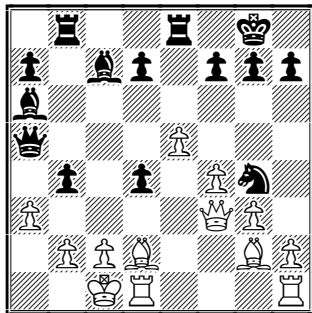
For about 30 minutes I couldn't make

a choice between three possible moves. It would be better to think longer on the previous or on the next move! After **18. ♖b1** c4! 19. ♖f3 ♗b7! 20. ♖e2 ♗xg2 21. ♖xg2 ♘d5! White's position is dangerous, but he is in the game after 22. ♗c1! ♘c3+ 23. bxc3 bxc3+ 24. ♗b3. Another line is **18. exf6** c4! 19. ♖f3 (19. ♖a3!?) 19... ♖xa2 20. ♗xb4 (I considered mainly 20. ♗c3 bxc3 21. bxc3 where Black is clearly better) 20... ♖xb4 21. ♖a3 ♖xa3 22. bxa3 ♖b6! 23. ♗f5! and Black is probably better, but there is a lot of play ahead.

### 18... ♗g4! 19. ♖f3?

A losing move. I certainly saw 19. ♗d5!, but underestimated my chances after 19... ♖f8 (or 19... ♖h8 20. ♗f3!?) 20. ♗f3! ♗f2 21. ♗g5.

### 19... cxd4! (D)



### 20. ♗xb4

20. ♖xg4 d3 (after 20... ♖a4 21. ♗xb4 ♖xb4 22. axb4 ♖a1+ 23. ♗d2 ♖xb2 24. ♖b1 White still has some hope) 21. ♖xd7 ♖bd8! or 21... dxc2, and Black's advantage is almost decisive.

### 20... ♖xb4 21. axb4 ♖xb4! 22. ♖d5

Or 22. ♖xg4 ♖b8 23. b3 ♖c3+ with the idea of 24... ♖a1+ 25. ♗d2 ♗a5+.

### 22... d3 23. ♖xd7 ♖b8 24. ♖xc7 d2+!

Followed by mate in two – good time to resign... **0-1**

□ GM G. Bagaturov (2424)

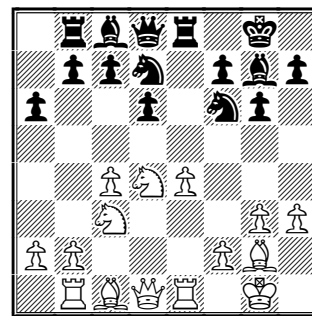
■ GM M. Golubev (2536)

Leuven (7), 10.11.2003 E68

**1. d4 ♗f6 2. c4 g6 3. ♗f3 ♗g7 4. g3 0-0 5. ♗g2 d6 6. 0-0 ♗bd7 7. ♗c3 e5 8. e4 exd4**

A slightly illogical, but popular continuation. White should play very carefully, avoiding all tricks to keep his advantage in the centre.

**9. ♗xd4 ♖e8 10. h3 a6 11. ♖b1 ♖b8 12. ♖e1 (D)**



An important position for the 'Gallagher Variation' (10...a6).

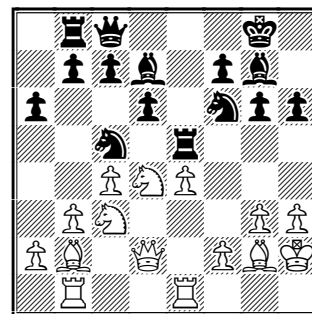
### 12... ♗c5

In the past I have tried both 12... ♗e5 13. b3 c5 and 12... c5. In these lines, ♖b1 is a very useful move for White and it's not clear if Black's counterplay with ...b7-b5 can succeed.

### 13. b3 ♗d7 14. ♗b2 h6

White has arranged his pieces solidly and refused to create even the slightest weakness on the queenside with a2-a4. Normally, Black plays here 14...b5, when White is slightly better after 15. cxb5 axb5 16. b4!.

### 15. ♖d2 ♖c8 16. ♖h2 ♖e5 (D)



The ...♖e5 idea in a similar situation was, as I remember, first used by Leonid Yurtaev. Here, unfortunately, it shouldn't have worked well.

### 17. g4

17. b4!± would be very strong – Black probably should reply 17... ♗a4, as 17... ♗xh3 18. bxc5 ♖h5 can be met with 19. ♖h1!.

### 17... ♗xg4 18. hxg4 ♖xg4

Here White had many options but it was not easy to stop Black's initiative.

### 19. f3

19. ♖e2?! ♖g5! is good for Black, but there were other ideas: 19. f4!?, 19. ♗de2!?, etc.

### 19... ♖h5+ 20. ♖g1 ♖g3 21. ♗de2

I was more afraid of 21. ♖f1!?, when 21... ♗d3?! 22. ♖xd3 ♗g4 23. ♗d1!

*This issue is prepared by GM Mikhail Golubev; technical editor Graham Brown.*

*Subscription is 15 Euros for 3 months. For further details please refer to <http://www.chesstoday.net>*

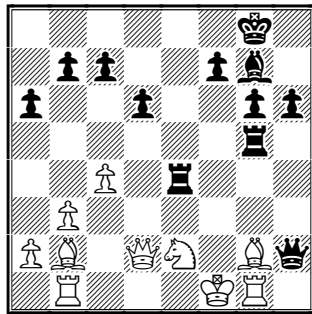
hardly works for Black.

**21...♖h2+ 22.♗f2 ♖g5 23.♖g1 ♖e8**

The last passive piece joins the attack.

**24.♗f1** The threat now is **25.♖f4...**

**24...♗fxe4! 25.♗xe4 ♗xe4 26.fxe4 ♖xe4 (D)**



**27.♖d3?!**

Missing Black's strong reply. **27.♗xe4??** loses after **27...♖xg1+ 28.♗xg1 ♖xd2**. But **27.♖xg5! hxg5 28.♗xe4 ♗xb2** would be critical. The play is quite unclear here, for example **29.♖xb2 ♖e5! 30.♖d2 ♖xe4 31.♖xg5 ♖g7**, etc.

**27...♖eg4!** Not **27...♖f5+?** **28.♗f3**.

**28.♗xg7 ♗xg7** Not **28...♖xg2?** **29.♗d4!**

**29.♖c3+!**

White must return some material in any case, and before that he at least should force Black's king to occupy the less favourable square.

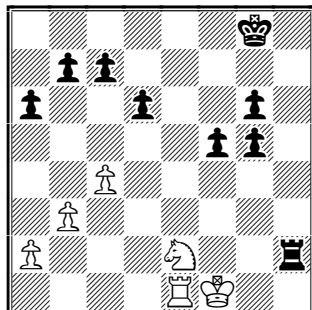
**29...♗g8! 30.♖h3**

Or **30.♖f3 ♖f5 31.♖xf5 gxf5**.

**30...♖xg2! 31.♖xh2**

After **31.♖xg2 ♖xg2 32.♖xg2**, Black would have one more pawn on the kingside in comparison with the **27.♖xg5!** line.

**31...♖xh2 32.♖xg5 hxg5 33.♖e1 f5! ♣ (D)**



Four pawns for a knight is quite a lot – objectively Black is winning.

**34.♗g1 ♖h4 35.♗c3 ♗f7 36.♗g2**

After **36.♗d5** Black plays **36...c6!** with the idea **37.♖e7+? ♗f8-+**, and White's knight is lost.

**36...♖d4 37.♗f2 ♖d2+ 38.♗e3 ♖h2**

**39.b4 ♖h3+ 40.♗d2 g4 41.♗d5 c6**

**42.♗f4 ♖a3 43.♗e6! b5?!**

In time trouble I couldn't calculate well the line **43...g3! 44.♗d8+ ♗f6 45.♗xb7 f4! 46.♗xd6 g2!-+** when the Black pawns are flying.

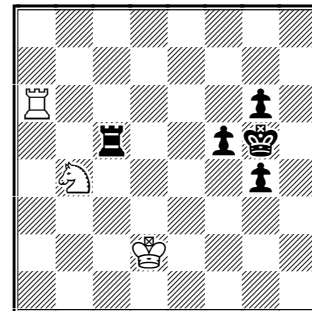
**44.♗d8+ ♗f6 45.c5! dxc5 46.bxc5**

**♖xa2+ 47.♗d3 ♖a3+ 48.♗d2 b4**

I wanted to be sure that White will not queen his c-pawn.

**49.♖e6+ ♗g5 50.♗xc6 ♖c3**

**51.♗xb4 ♖xc5 52.♖xa6 (D)**



**52...♖e5 52...f4!? 53.♗d3**.

**53.♗d3 ♖e8 54.♗c5 g3 55.♗e6+**

**♗g4 56.♗g7! ♖d8+** Also after **56...♖e5!?** **57.♖xg6+ ♗f3 58.♗e6!** it is unlikely that Black can win.

**57.♗e2 g5 58.♗xf5!** The key move.

**58...♗xf5 59.♗f3 ♖d3+ 60.♗g2**

Black is not able to make progress here and the draw is inevitable.

**60...♖e3 61.♖a4 ♖e4 1/2-1/2**

#### Solution to Chess Swindle:

**40.♖f1!? ♖xg3?? 41.♖xf7+!**

Draw agreed. I had planned **41...♗h6 42.♖h7+ ♗g5 43.♖xg6+ ♗f4 44.♖e4+ 44...♗g5 45.♖g6+** draw by repetition, but later, Steve pointed out the more elegant **44.♖xg3+ ♗xg3** stalemate.

**Chess Today** is published by Alexander Baburin, 3 Eagle Hill, Blackrock, Co. Dublin, Ireland. Tel: (353-1) 278-2276. Fax: (353-1) 283-6839. Website: <http://www.chesstoday.net>  
**Editors:** GMs Baburin, Golubev and Scherbakov, IMs Barsky, Notkin and Vlassov.  
**Technical editors:** Graham Brown and Ralph P. Marconi. **Chess Today is copyright 2003 by Alexander Baburin** and protected intellectual property under the International Copyright convention. Subscribers are allowed to non-commercially distribute copies of Chess Today at their chess club, chess tournaments and via e-mail (on an occasional basis). Any other use and distribution (reproduction, via print, electronic format, or in any form whatsoever), as well as posting on the Web, is strictly prohibited without express written permission.

*This issue is prepared by GM Mikhail Golubev; technical editor Graham Brown.*

*Subscription is 15 Euros for 3 months. For further details please refer to <http://www.chesstoday.net>*